



Sample Day in the Life of an Elementary School Student During COVID-19

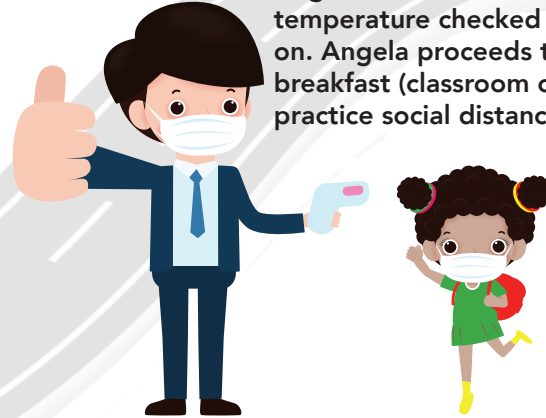
1

7:15 - 7:30 a.m.
Angela travels to school.



2

7:30 - 7:55 a.m.
Angela enters the building and gets her temperature checked at the front door with mask on. Angela proceeds to a designated area to eat breakfast (classroom or cafeteria). School will practice social distancing to the extent possible.



3



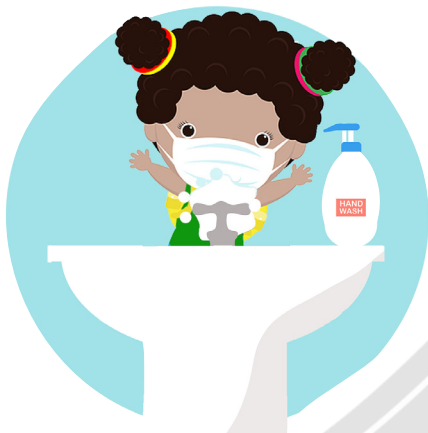
8:00 - 11:00 a.m. (Morning Instruction)

- Angela washes her hands before entering the room.
- Angela enters the classroom and finds her seat for instruction.
- Angela wears her mask.
- Angela receives instruction from her teacher with headsets on and she signs into TEAMS (teacher may be teaching in-person or teacher may be at home teaching virtually)
- Angela will receive synchronous and asynchronous instruction.
- Throughout the morning instruction, Angela will go the restroom to wash hands.

* Synchronous - learning together
Asynchronous - learning independently

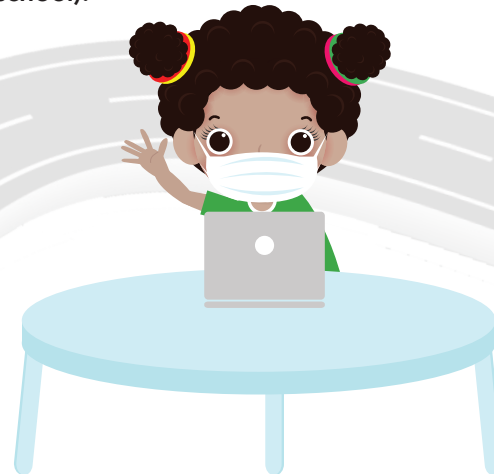
4

- 11:00 - 11:30 a.m.
- Angela washes hands and eats lunch in classroom or designated area.
 - After lunch, Angela washes hands and returns to classroom.



5

- 11:30 a.m. - 3:00 p.m.
- Angela will sign back on to TEAMS with her teacher (teacher may be teaching from a remote location or teacher may be present in the classroom).
 - Angela returns to class for afternoon classes (recess or outside breaks will be incorporated into the school).



6

3:00 p.m.
Angela prepares to go home and exits the building.

